

THOUGHTS
AND
FEELINGS

Paintings by
Jim Muehlemann

THOUGHTS AND FEELINGS

Paintings by Jim Muehlemann

May 2 - 30, 2025

CURATOR / DESIGN

Edward Hettig

EXHIBITION GALLERY

Alexander/Heath Contemporary

109 Campbell Avenue SW

Roanoke, VA 24011

HOME GALLERY

Steven Francis Fine Art

1200 Main Street

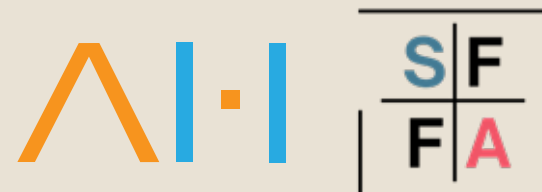
Lynchburg, VA 24504

FURTHER RESOURCES

jimmuehlemann.com

©2025 Jim Muehlemann

Steven Francis Fine Art



Long Ago Time | 2025 | Oil on Linen | 46" x 42"

A fascination with the human face is never long absent from Jim Muehleemann's work, even apart from any interest it has in the body—no—*especially* apart from such an interest. There are faces of every character and size, faces depicted in all degrees of clarity; elegant faces, jokey faces, big faces, *huge* faces, faces of neon brightness, and faces that lurk in shadow as if in some dark wood. There are grotesque faces, distorted faces, faces that seem to quiver in time as they morph into non-human things or dissolve into empty space or appear, just barely, to have emerged from that same space. It is in these faces—the twisted, layered, incomplete faces—that the impulses in Muehleemann's art toward figuration and abstraction most easily complement each other. In some ways, the faces in his paintings seem to have minds of their own. They will show up where you don't expect them—casually brushed on a figure caught crouching along a picture's darkened edge; crashing through the background, bright-colored and immense, on its reckless way out of the frame; or peeking coyly out from zones of whirling pigment, planned collaborations between incipient design and the image long ago imprinted on our infant brains. But just where you most expect that a face will be—that is, in the front of a human head—as often as not in these paintings, there is no face to be found. Even with minds of their own, there's rarely any telling what they're thinking. These are faces that watch, that stare back, uncanny partners in our viewing. They both anchor our perception and baffle it as well.

Muehleemann's marvelous paintings are generous to their watchers, to their viewers. Despite their clear intellectual underpinnings, they are never aloof but address us all with a vigorous and ongoing visual appeal. They are capacious paintings with a wide range of curiosity; complex paintings that contain multitudes and are comfortable with contradiction. They are unafraid of the hybrid, the chimerical, and are unafraid of humor; and they are witty enough to deploy their contraries with confidence—the broad, even the bawdy, alongside the elegant, the solid alongside the spacious, the loopy alongside the sublime. The paintings take time to know. The work invites viewing, but it demands thought.

William Levitan



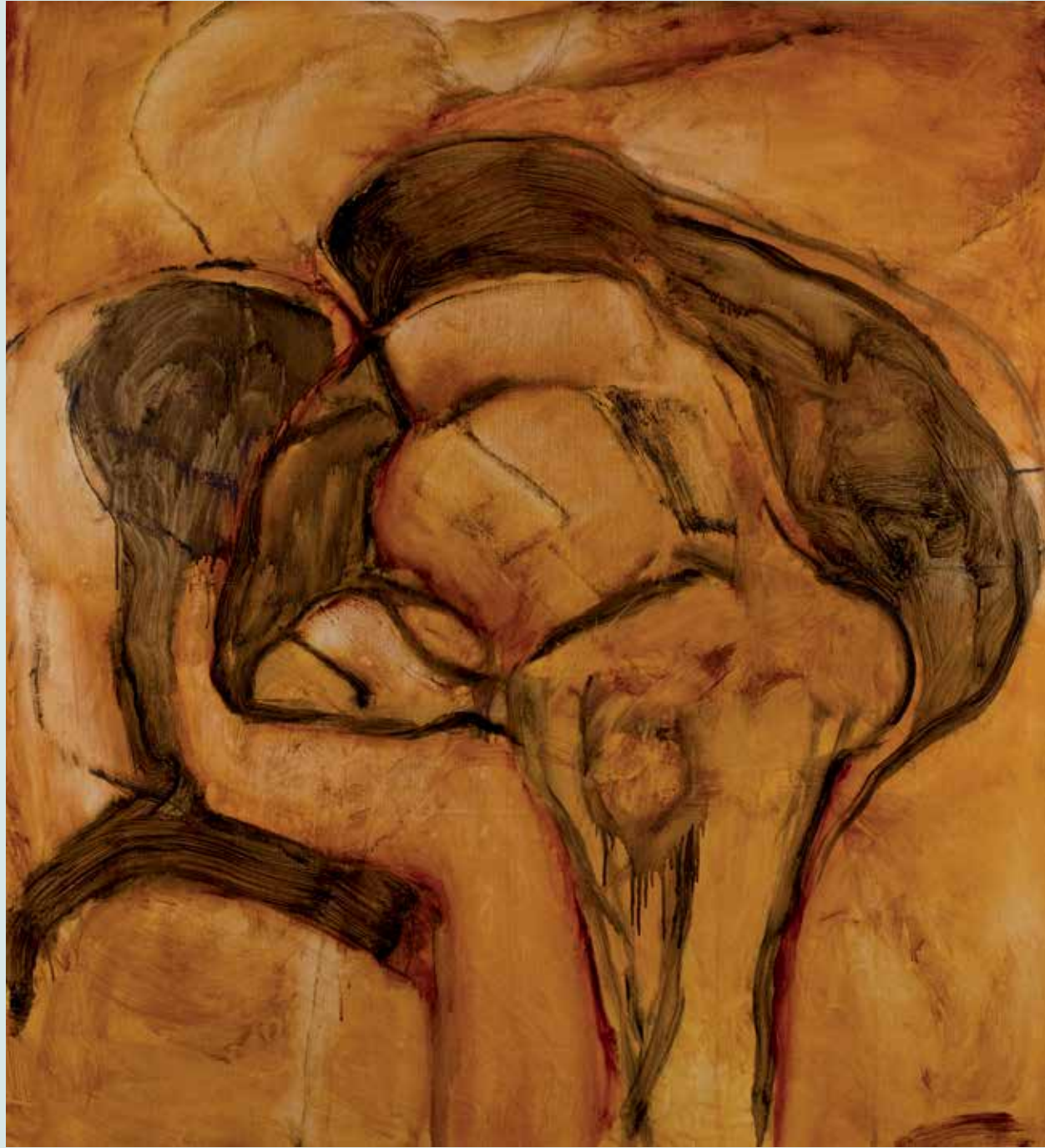
St. Charles | 2024 | Oil on Linen | 46" x 42"



There Is No What | 2024 | Oil on Linen | 42" x 46"



Fat Tuesday | 2024 | Oil on Linen | 42" x 46"



Chimera | 2024 | Oil on Linen | 46" x 42"



Holy Moly | 2024 | Oil on Linen | 46" x 42"



Creatures of the Forest | 2024 | Oil on Linen | 46" x 42"



Zydeco | 2024 | Oil on Linen | 46" x 42"



Waltzing Matilda | 2024 | Oil on Linen | 46" x 42"



Easy Does It | 2024 | Oil on Linen | 46" x 42"



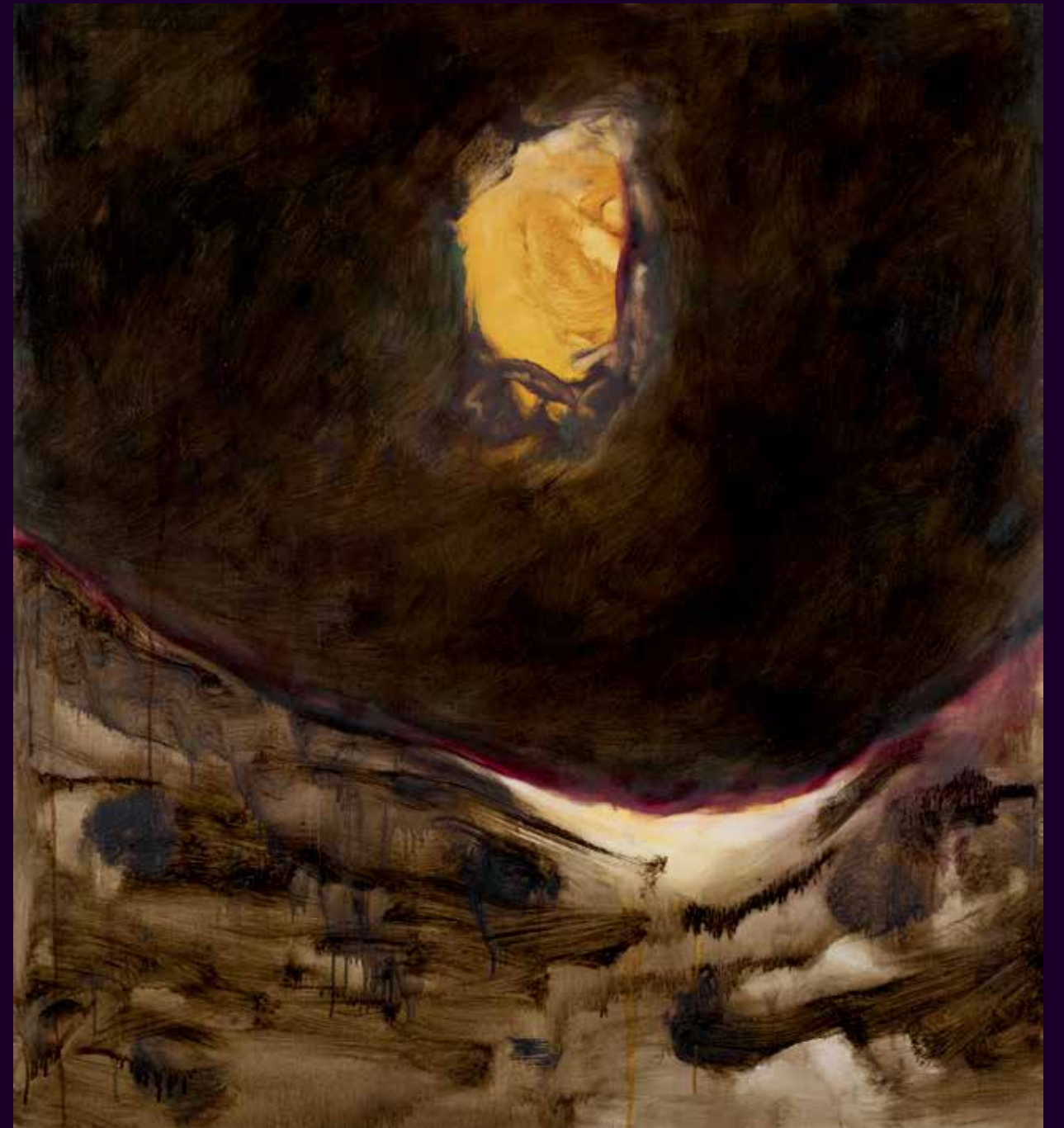
For SunRa | 2024 | Oil on Linen | 42" x 46"



The Afterlife of Marsden Hartley | 2025 | Oil on Linen | 42" x 46"



Dust in the Air | 2023 | Oil on Linen | 46" x 42"



Night Flower | 2024 | Oil on Linen | 46" x 42"



Folk Tale | 2025 | Oil on Linen | 42" x 46"



A Person | 2025 | Oil on Linen | 42" x 46"



Wood Dragon | 2024 | Oil on Linen | 46" x 46"

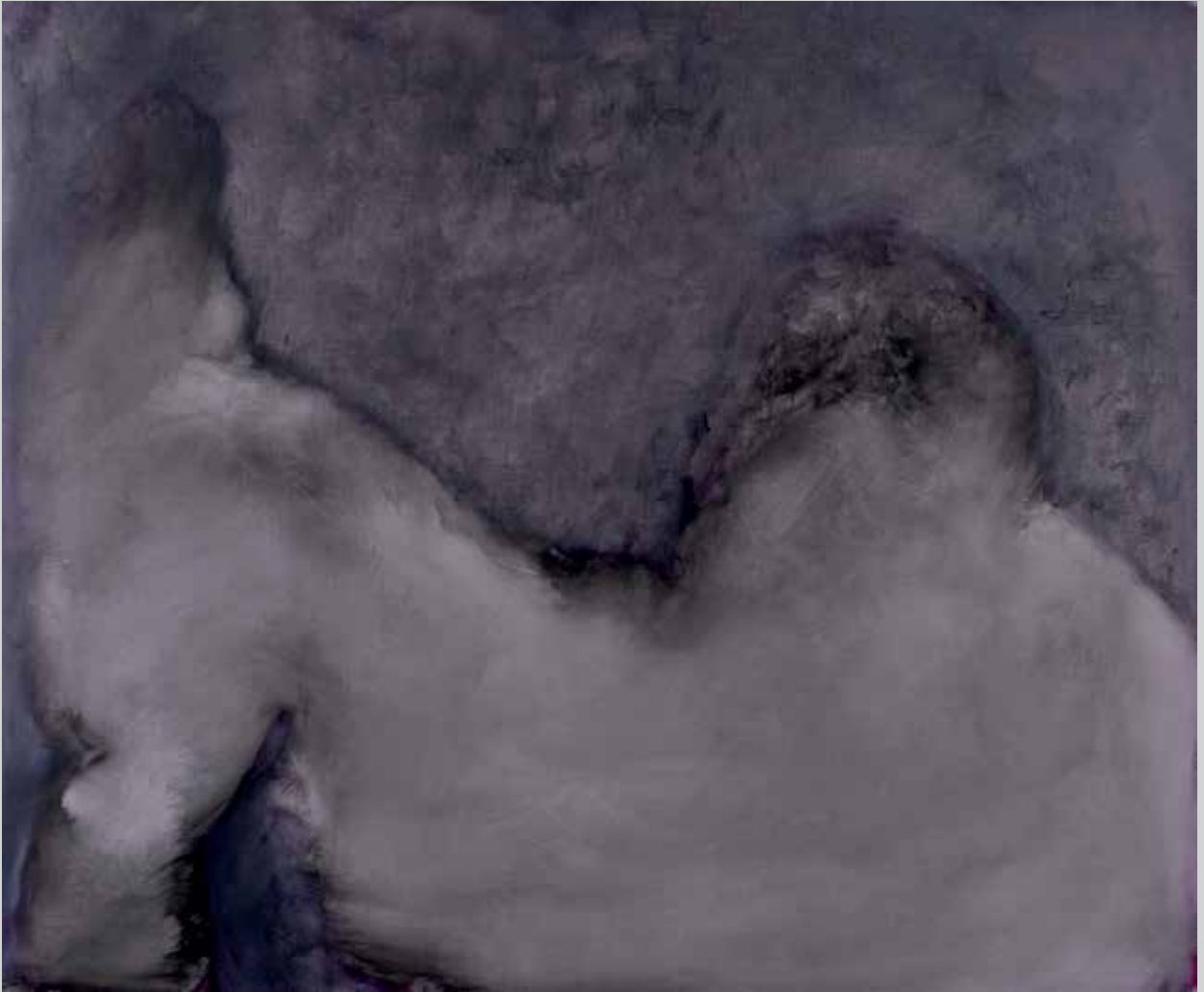


The Desert Again | 2024 | Oil on Linen | 46" x 42"

Jim Muehleemann earned a B.F.A. from the University of Illinois and an M.F.A. from Syracuse University. He was awarded a CAPS Grant from the State of New York in 1980, the Rome Prize from the American Academy in Rome in 1982, and a grant from the Adolph & Esther Gottlieb Foundation in 1995. His work has been shown in solo exhibitions in New York at Pamela Auchincloss Gallery, Penine Hart Gallery and Althea Viafora Gallery as well as in Philadelphia at Paul Cava Gallery. His work has been featured in many solo and group exhibitions in the United States and Italy, including one-person exhibitions in Virginia, at the Maier Museum of Art, Lynchburg, the Craddock-Terry Gallery, Lynchburg, and at the Fayerweather Gallery, University of Virginia, in Charlottesville. Muehleemann has most recently exhibited work at Steven Francis Fine Art in Lynchburg, Virginia. Jim Muehleemann is professor emeritus of Studio Art, at Randolph College. He lives and works in Virginia.



Flesh and Spirit | 2024 | Oil on Linen | 42" x 46"



Myth | 2023 | Oil on Linen | 40" x 48"